



REPUBLIKA SLOVENIJA  
MINISTRSTVO ZA KMETIJSTVO,  
GOZDARSTVO IN PREHRANO

OECD: Implement a whole-of-government approach to policies for rural

## EXPERIENCE FROM SLOVENIA - LEADER/CLLD approach

**Marjeta Jerič**

Ministry of Agriculture, Food and Forestry,  
LEADER Office

15 March 2023



Evropski kmetijski jamstveni sklad  
Evropski kmetijski sklad za razvoj podeželja



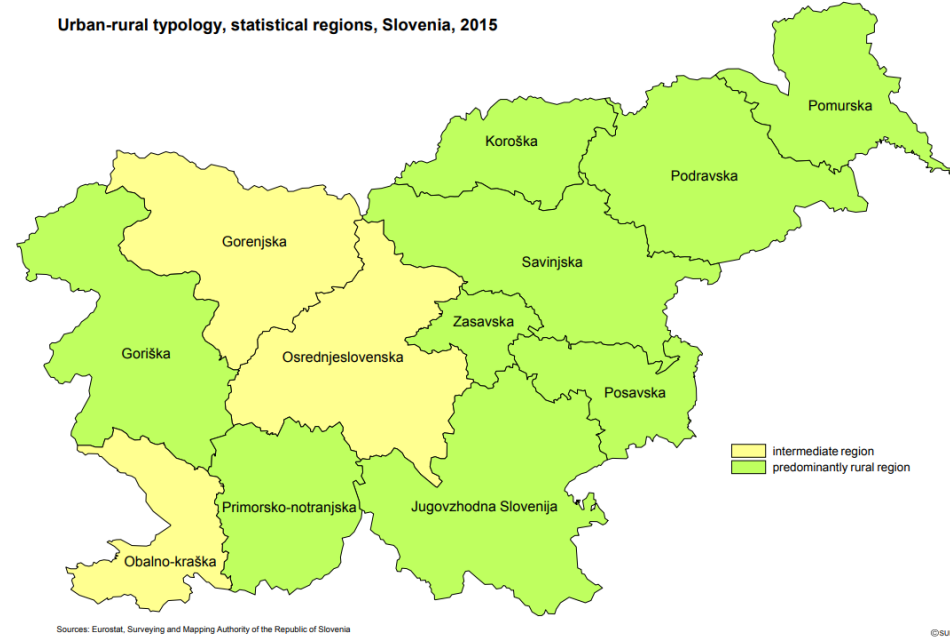
SKUPNA  
KMETIJSKA  
POLITIKA

# Rural areas in Slovenia – some facts

**X** No unit definition of rural

- **Rural-urban typology:** 9 predominantly rural and 3 intermediate regions
- Definition in **CAP Strategic Plan 2023-2027**  
→ settlements under 10.000 inhabitants  
= approx **87 % of rural areas** = **75 % of the entire population**
- Slovenia is characterized by suburbanization and a relatively small proportion of the population living in cities. The Slovenian countryside is in the process of constant transformation and is faced with many structural problems, which differ greatly between regions.

Urban-rural typology, statistical regions, Slovenia, 2015



## Rural areas in Slovenia – some facts



- **Advantages:** long-term experience with the implementation of integrated rural development programs and the active involvement of local communities and the population, strong social capital, the educational structure of the population (including young people) is also improving in rural areas; quality of life indicators are generally improving, the level of employment, even in rural areas, in Slovenia is above the EU average.
- **Weaknesses:** population aging, negative population trend, high development risk of some regions, areas without good connections, risk of poverty and social exclusion of certain vulnerable groups in rural areas (pensioners, elderly women, etc.), lack of quality jobs - high share of daily migration.
- **Challenges:** conflicts between **farmers** with the rest of the rural population

# Strategic documents

- ✗ No common rural development strategy
- ✓ Slovenia's development strategy 2030

## Common agricultural policy (CAP)

- ✓ The Rural Development Program of the Republic of Slovenia for the period 2014-2020 (EAFRD) - extension of the implementation for 2 years
- ✓ National Resolution “Our food, rural areas and natural resources post 2021”
- ✓ CAP Strategic plan for the period 2023-2027 – *approved by EC at 28th October 2022* → consistent with the Partnership agreement between SI – EC 2021-2027





# BOTTOM UP APPROACH 1991-2003



## 1. INTEGRATED RURAL DEVELOPMENT AND VILLAGE RENEWAL PROGRAMMES 1991-1996

Results: **300 projects implemented**

Issue to address: solving questions only in a small community or a village and no proper knowledge on project implementation

## 2. REGIONAL RURAL PROGRAMMES 1996-2003

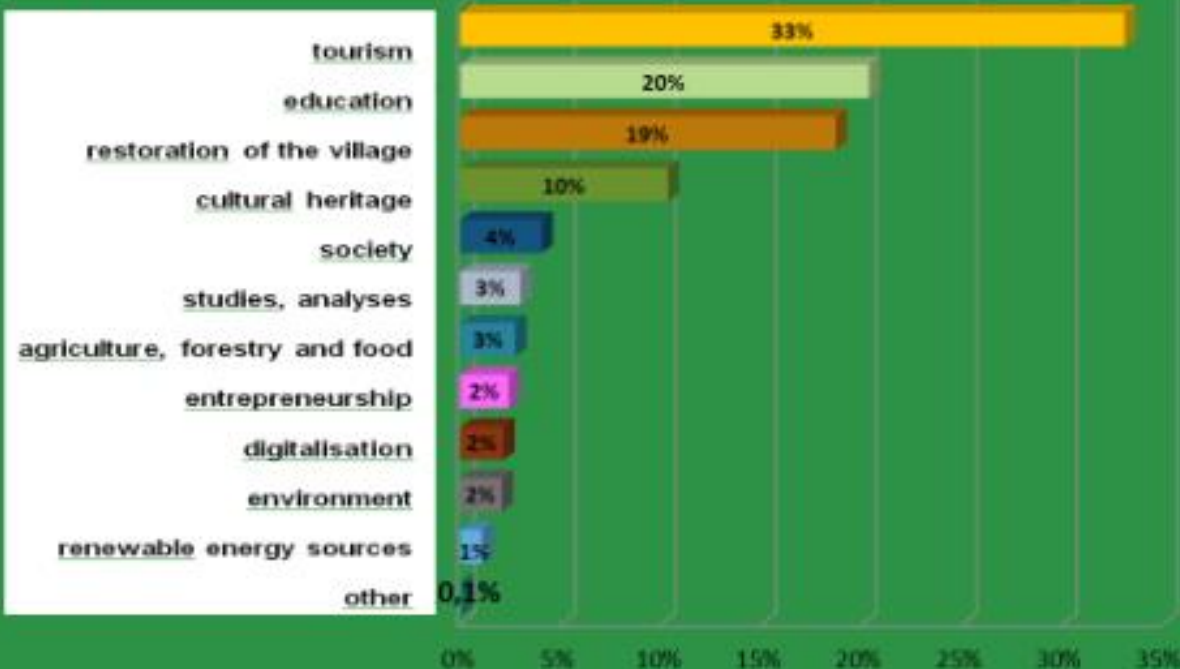
- combination of development goals of at least three municipalities
- formal and effective cooperation and networking
- knowledge of project preparation, finance planning and implementation

Results: **19 projects** in 118 municipalities,  
20 projects of Wine roads of Slovenia in 76 municipalities

# LEADER 2007-2013

**33** LAG - EARDF  
**1** fishery LAG - EFF  
**97 %** territory of RS  
**94 %** rural inhabitants

## Topics of LEADER projects



### EFF:

#### **20 projects**

Paid 2,7 MIO EUR (96,5% of available funds)

### EAFRD:

#### **1.400+ projects**

Paid 30,7 MIO EUR (98% of available funds)





# LEADER/CLLD 2014-2020

## **1. New implementation model => three funds in one LDS**

- > good definition of a LDS structure at the very beginning
- > good coordination between MAs , paying agencies, intermediate bodies, DGs, LAGs is essential

## **2. Administrative procedures**

- > national CLLD legislation – harmonisation of procedures

## **3. Basic LEADER principles and approach**

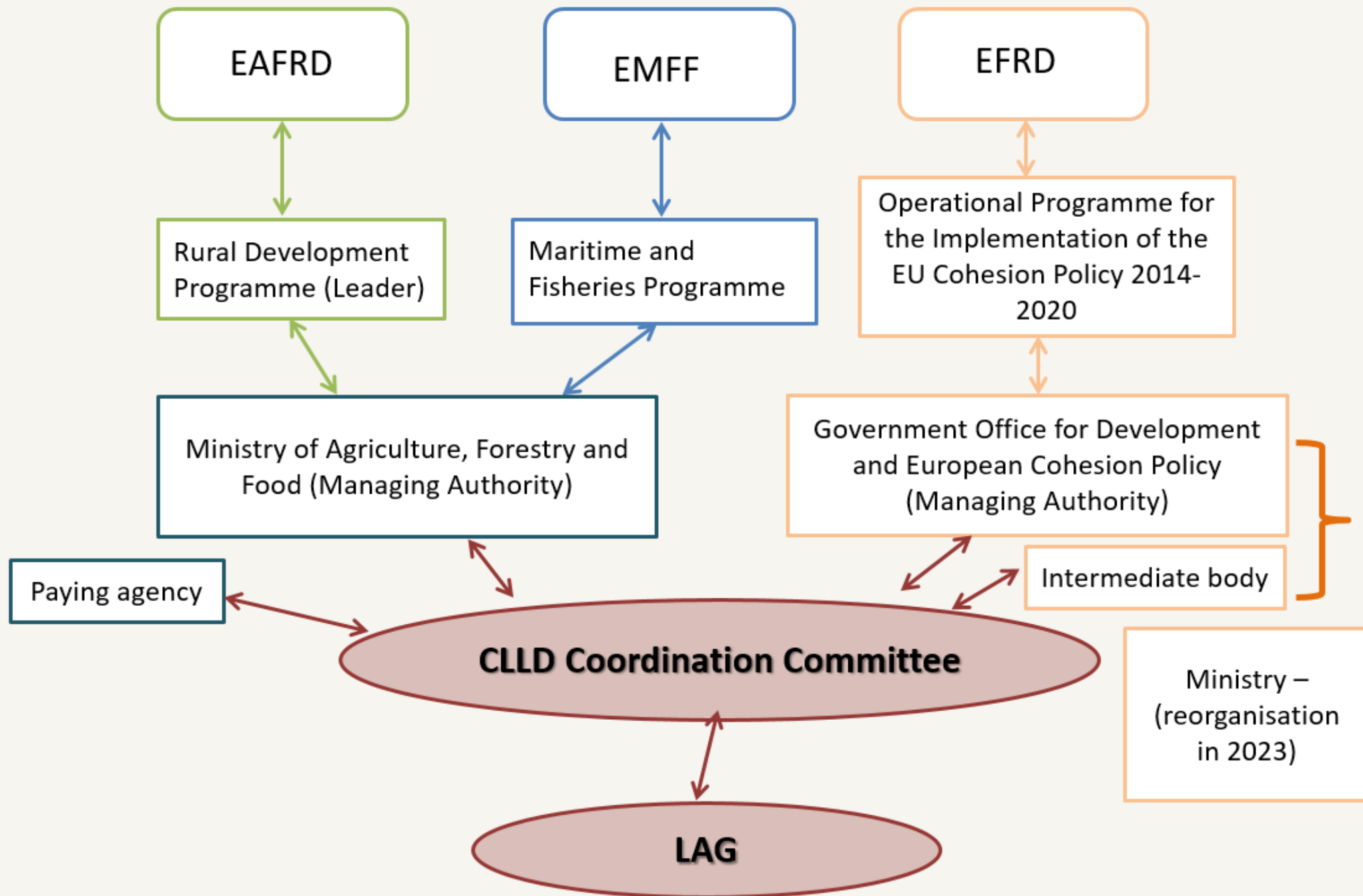
Bottom-up approach ≠ principles of „main“ fund interventions

## **4. Administrative capacity of LAGs**

- > appropriate and qualified LAG staff defined at the beginning of the programming period
- > capacity building for LAGs (constant trainings and communication)

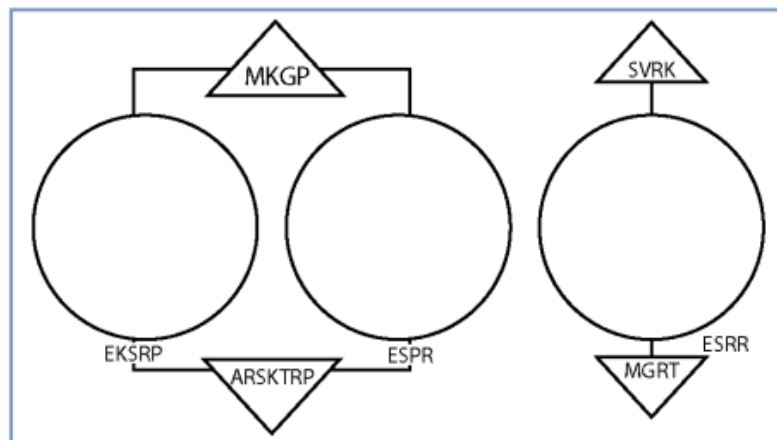
## **5. Integrated territorial development – rural development should be a complex process with many actors and with economic, social and cultural dimensions**







evropske institucije (Evropska komisija, ENRD, DG AGRI, DG REGIO)



Komisija za izvajanje programa CLLD (DRSP)



podeželski parlamenti (v različnih državah)



evropska združenja (ELARD, Prepare, ERCA)

## LEADER/ CLLD POKRAJINA V SLOVENIJI

- Meža za podeželje
- Koordinacijski odbor CLLD za 2014–2020
- organ upravljanja
- plačilna agencija, posredniški organ
- financiranje iz treh skladov (EKSRR, ESRR, ESRR)
- Društvo za razvoj slovenskega podeželja (DRSP)
- povezave in sodelovanje med lokalnimi akcijskimi skupinami v Sloveniji
- lokalne akcijske skupine v Sloveniji
  - organi LAS
  - S skupščina
  - P predsednik
  - U upravni odbor
  - N nadzorni odbor
- vodilni partner
- območje lokalne akcijske skupine
- 1,2,3 itd. število občin, vključenih v lokalno akcijsko skupino
- akterji in deležniki na podeželju
  - povezave med sektorji in akterji
  - javni sektor
  - ▲ zasebni sektor
  - nevladni sektor

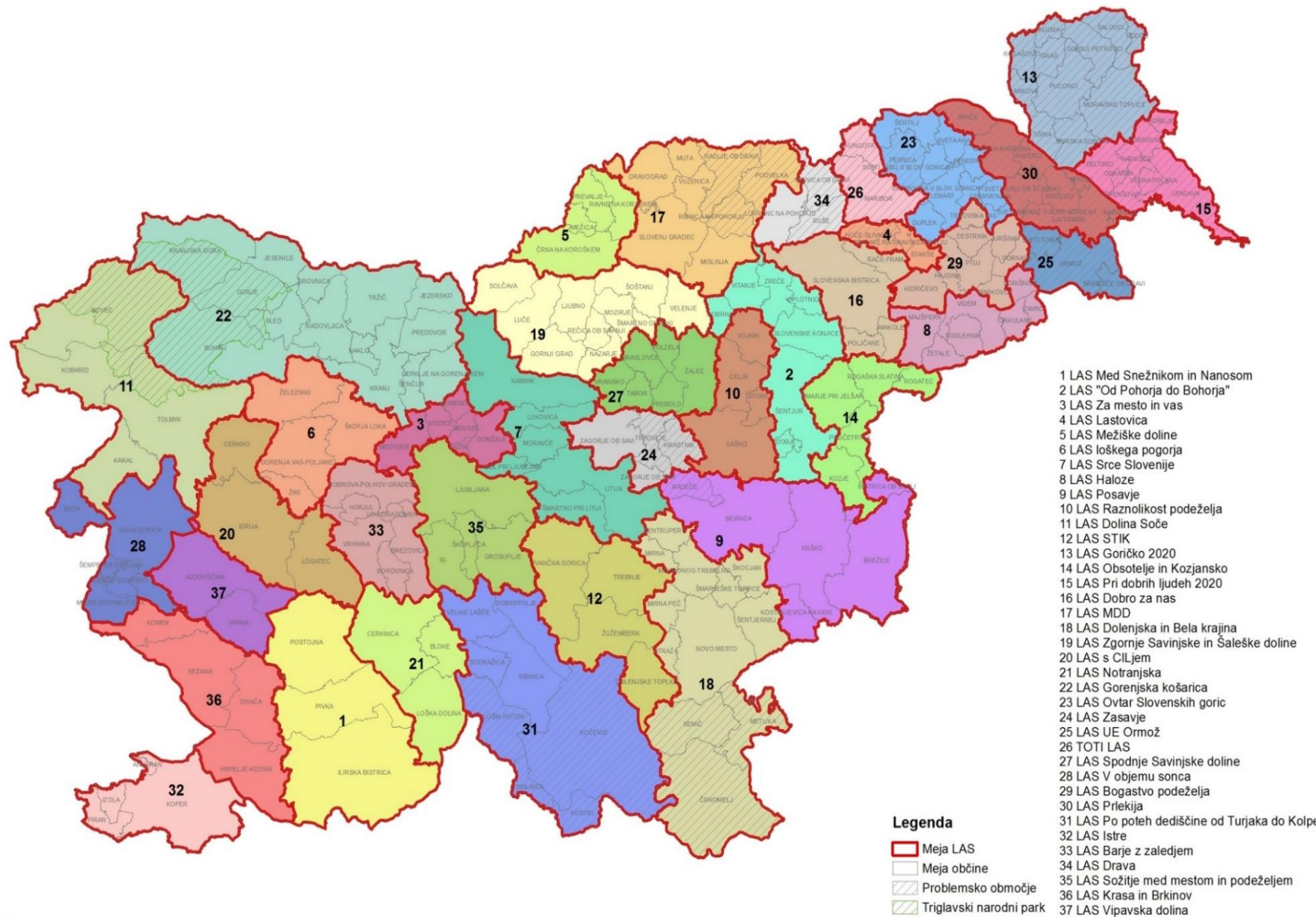
LEADER/CLLD  
structure in Slovenia

→ Publication  
(published in 2022) -  
LEADER/CLLD  
approach in Slovenia



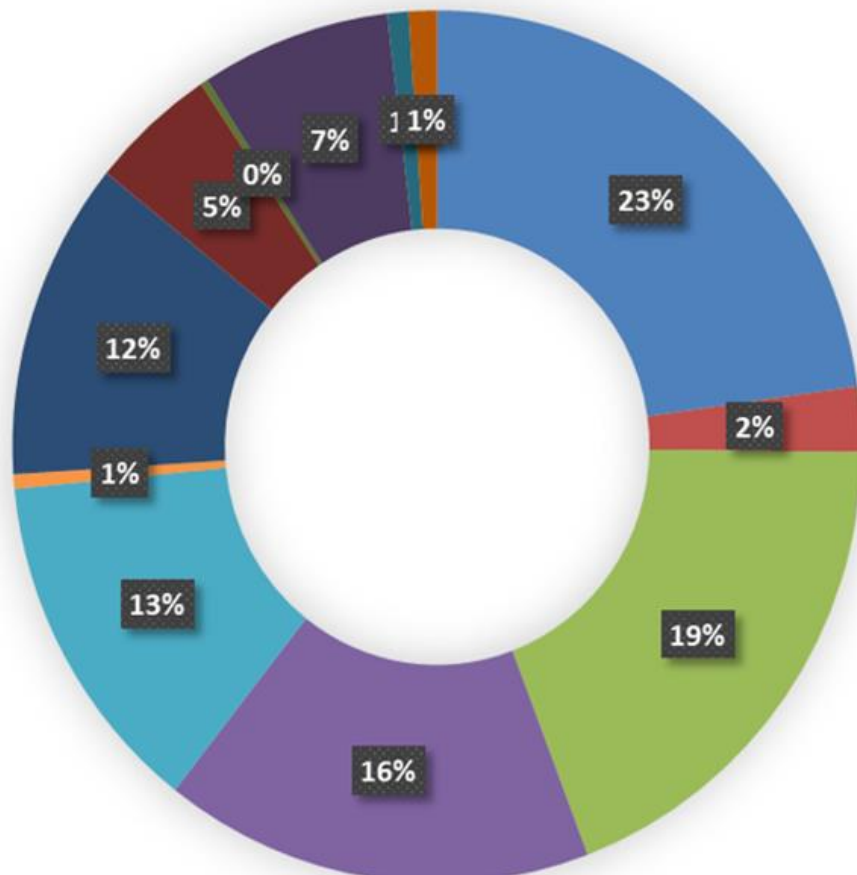
**37 local action groups (LAGs)**  
**= 37 local development strategies (LDSs)**  
**entire territory of Slovenia**

**= 37 EAFRD+EFRD (+ 4 EMFF) → rural areas (under 10.000 inhabitants), small urban areas, coastal and inland communities**





## LEADER projects (% of project by content)



- Tourism
- Education
- Village renewal
- Cultural heritage
- Society
- Studies, analyses
- Agriculture, forestry and food
- Entrepreneurship
- Digitalization
- Environment
- Renewable energy sources, climate changes
- Bioeconomy

### EAFRD:

**19.2** > 750 projects (36,5 mio EUR)

**19.3** = 44 cooperation projects /  
= 23 international (13 mio EUR)



# KEY SUCCESSES IN 2014-2020

- LEADER is being implementing for the second programming period and we have managed to establish **LEADER/CLLD approach with 3 funds** (EAFRD, EMFF and EFRD).
- All LAGs and LDSs are **multi-fund** (37 EAFRD+ EFRD, + 4 of all EMFF).
- LAGs cover **the entire territory of Slovenia, all municipalities** (all rural inhabitants, small urban areas, fisheries communities).
- LAGs have been selected for the **entire programming period**. Each LAG has own LAG Manager – professional organisation with qualified staff.
- **Implemented SCOs** in our LEADER/CLLD approach: lump sum for preparatory support, draft budget 5000 EUR for small projects, standard scales for unit costs (hourly rate) and flat rate - 15% for indirect costs.
- **Improved capacity building** between MA, intermediate body ERDF, paying agency and LAGs (at least two seminars or workshops for LAGs per year, Webinars, monitoring and regular surveillance, Forum for Q/A, Facebook page).
- **Intense promotion** of LEADER/CLLD approach (LAG Catalogue, Facebook account, communication with representatives at EC, ENRD, DG AGRI).



# LEADER/CLLD 2021-2027

- LEADER is part of common **CLLD** (funds EAFRD + ERDF), CLLD EMFF separated
- **Common Multi-sectoral CLLD working group 2021-2027**
- **Joint LEADER/CLLD regulation and call for new LDS published:**
  - 37 local partnerships (mainly the same areas, some changes of borders, the entire country):
    - LAGs are contractual partnerships of public, economic and social sector
    - preparation of LDS → approval by December 2023





THANK YOU FOR YOUR ATTENTION.



**More info:**

**Web:** <https://skp.si/en/>

**FB:** CLLD Slovenija

