



REPUBLIC OF SLOVENIA  
MINISTRY OF AGRICULTURE,  
FORESTRY AND FOOD



# RURAL DEVELOPMENT PROGRAMME

of the Republic of Slovenia  
for the period  
2014–2020

## Basic Information on Measures

First update with regard to the second amendment to the RDP  
may 2017



The European Agricultural Fund for Rural Development  
Europe investing in rural areas



# CONTEST

<b>ABOUT THE PROGRAMME</b>	<b>5</b>
Geographical area of programme implementation	5
Determination of the RDP 2014-2020 content	6
Financial framework	6
<b>RURAL DEVELOPMENT PROGRAMME 2014–2020 MEASURES</b>	<b>7</b>
<b>TRANSFER OF KNOWLEDGE AND INFORMATION ACTIVITIES (measure 1)</b>	<b>7</b>
Sub-measure M1.1	7
Sub-measure M1.2	7
<b>ADVISORY SERVICES, FARM MANAGEMENT SERVICES AND FARM RELIEF SERVICES (measure 2)</b>	<b>7</b>
Sub-measure M2.1	8
<b>QUALITY SCHEMES FOR AGRICULTURAL PRODUCTS AND FOODSTUFFS (measure 3)</b>	<b>8</b>
Sub-measure M3.1 - Support for new participation in quality schemes	8
Sub-measure M3.2 - Support for information and promotion activities carried out by producer groups in the internal market	9
<b>INVESTMENTS IN PHYSICAL ASSETS (measure 4)</b>	<b>10</b>
Sub-measure M4.1 - Support for investments in agricultural holdings	10
Sub-measure M4.2 - Support for investments in the processing, marketing and/or development of agricultural products	11
Sub-measure M4.3 - Support for investments in infrastructure related to the development, modernisation or adaptation of agriculture and forestry	12
<b>DEVELOPMENT OF FARMS AND ENTERPRISES (measure M6)</b>	<b>13</b>
Sub-measure M6.1 - Business start-up aid for young farmers	14
Sub-measure M6.3 - Business start-up aid for the development of small farms	15
Sub-measure M6.4 - Support for investments in the establishment and development of non-agricultural activities	15
<b>BASIC SERVICES AND VILLAGE RENEWAL IN RURAL AREAS (measure M7)</b>	<b>16</b>
Sub-measure M7.3 - Support for broadband infrastructure, including its establishment, improvement and expansion, passive broadband infrastructure and the provision of access to broadband internet and solutions related to e-administration	16
<b>INVESTMENTS IN THE DEVELOPMENT OF FOREST AREAS AND THE IMPROVEMENT OF FOREST VIABILITY (measure M8)</b>	<b>17</b>
Sub-measure M8.4 - Support for remedying damage to forests due to forest fires and natural disasters and catastrophic events	17
Sub-measure M8.6 - Support for investments in forestry technologies and in processing, mobilisation and marketing of forest products	18
<b>SETTING UP OF PRODUCER GROUPS AND ORGANISATIONS (measure M9)</b>	<b>19</b>
<b>AGRI-ENVIRONMENT-CLIMATE PAYMENTS (measure M10)</b>	<b>20</b>
Sub-measure M10.1 - Payment of agri-environment-climate commitments	20
<b>ORGANIC FARMING (measure M11)</b>	<b>21</b>
<b>PAYMENTS FOR AREAS WITH NATURAL OR OTHER SPECIFIC CONSTRAINTS (measure M13)</b>	<b>22</b>
<b>ANIMAL WELFARE (measure M14)</b>	<b>23</b>
<b>COOPERATION (measure M16)</b>	<b>23</b>
Sub-measure M16.2 - Support for pilot projects and for the development of new products, practices, processes and technologies	24
Sub-measure M16.4 - Support for horizontal and vertical cooperation between stakeholders in the supply chain aimed at establishing and developing short supply chains and local markets and for promotion activities at the local level, which are related to developing short supply chains and local markets	24
Sub-measure M16.5 - Support for joint measures aimed at mitigating climate change or adapting to climate change and for joint approaches to environmental projects and permanent environmental practices	25
Sub-measure M16.9 - Support for the diversification of farming activities to activities concerning health care, social integration, community-supported agriculture and education about the environment and food	26
<b>SUPPORT TO LOCAL DEVELOPMENT WITHIN THE LEADER INITIATIVE (COMMUNITY-LED LOCAL DEVELOPMENT) (measure M19)</b>	<b>26</b>
<b>INDICATIVE BREAKDOWN BY MEASURES</b>	<b>29</b>
<b>RURAL NETWORK</b>	<b>31</b>
Do you wish to participate?	31
<b>PROVISION OF INFORMATION TO THE PUBLIC ON ACTIVITIES RECEIVING SUPPORT WITHIN THE RDP 2014–2020</b>	<b>32</b>
<b>CONTACT POINTS</b>	<b>33</b>



# ABOUT THE PROGRAMME

The Rural Development Programme of the Republic of Slovenia for the period 2014–2020 (RDP 2014–2020) is a joint programme document of the Republic of Slovenia (RS) and the European Commission constituting the basis for the absorption of financial resources from the European Agricultural Fund for Rural Development (EAFRD). The EAFRD is included in the so-called »Common Strategic Framework for EU Funds« and is thus directly integrated in the pursuit of objectives within the Europe 2020 Strategy.

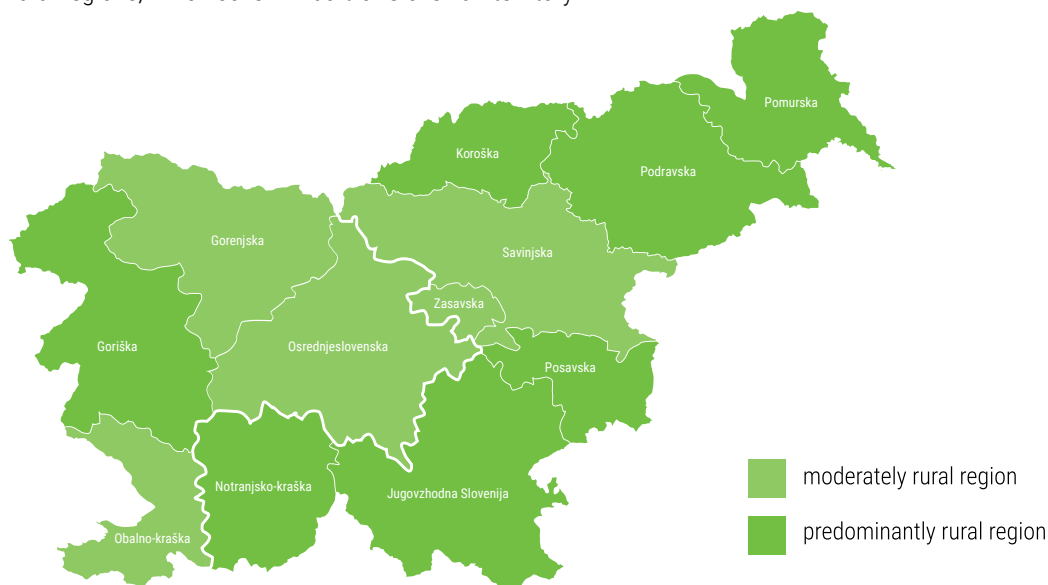
The RDP 2014-2020 reflects national priority tasks defined by the RS on the basis of situation analyses in agriculture, food technology and forestry, and the interaction of these economic sectors with other operational fields in the entire territory of the RS.

The European Commission officially confirmed the RDP 2014-2010 on 13 February 2015. The Commission confirmed the first amendment to the RDP 2014-2010 on 23 March 2016 and the second amendment on 14 December 2016.

## Geographical area of programme implementation

The RDP 2014-2020 covers the entire territory of Slovenia.

According to the definition of rural regions by the Organisation for Economic Co-operation and Development (OECD) the RS as a whole is classified as a rural area. Slovenian statistical regions are classified as predominantly rural regions, which cover 58.65% of Slovenian territory, and moderately rural regions, which cover 41.63% of Slovenian territory.



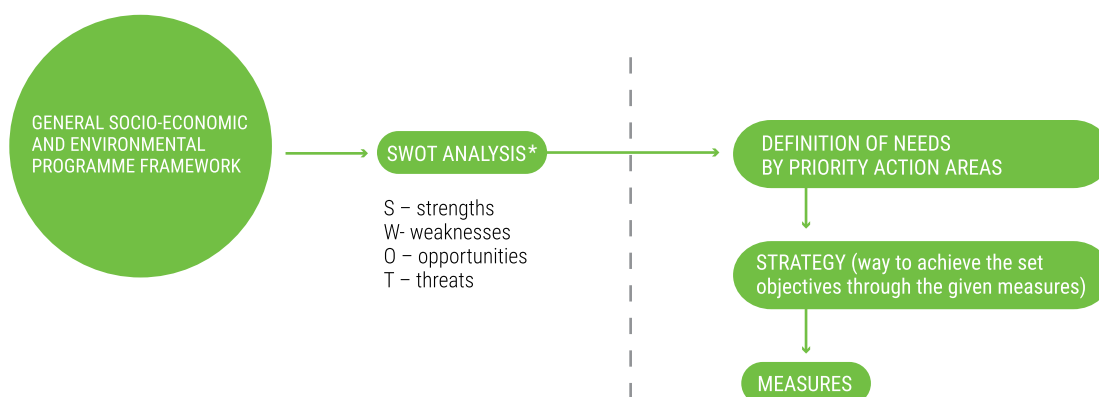
**Figure:** Classification of statistical regions by typology of OECD agricultural areas (NUTS3) and division into two cohesion regions: Eastern and Western Slovenia

**Source:** SORS and Surveying and Mapping Authority of the Republic of Slovenia

In this programme period, the RS is divided into two cohesion regions: Eastern and Western Slovenia. Eastern Slovenia is composed of eight statistical regions and covers 60.2% of the area of the RS and 53% of all Slovenia's population live in this area. Western Slovenia is composed of four statistical regions and covers 39.8% of the area of the RS and 47% of all Slovenia's population live in this area.

The EAFRD contribution rate for all measures is the same in both cohesion regions. At least 60% of EAFRD funds should be allocated to Eastern Slovenia.

## Determination of the RDP 2014-2020 content



The drafting of the RDP 2014-2020 started by defining the general socio-economic and environmental programme framework that comprises the entire description of the programme area with regard to physical and geographical characteristics, socio-economic characteristics and the situation in the environment, in agriculture, food technology and forestry. It was followed by a SWOT analysis, on the basis of which the needs and six priority action areas were defined, such as:

1. Facilitation of structural adjustment processes in agriculture and, consequently, the creation of conditions for increasing the productivity of Slovenian agriculture;
2. Efficient market-oriented organisation of agriculture, strengthening of agro-food chains and improved visibility and quality of local products;
3. Sustainable exploitation of forests and increasing added value of wood by improving market integration in forestry and along the forest-wood chain and by increasing competitiveness in forestry and non-industrial wood processing.
4. Promotion of agricultural practices with a beneficial impact on natural resources and adaptation to climate change;
5. Green jobs and coherent and sustainable development of rural areas based on the development of endogenous potentials of the local environment;
6. Transfer of knowledge and innovation, environmental care and climate change being horizontal objectives pursued by all five priority areas of action.

### Financial framework

Over EUR 1.1 billion in public funds have been made available in the context of the RDP 2014–2020. EAFRD has contributed EUR 838 million, whereas the remaining amount is financed by Slovenia from its state budget.

With regard to the content of measures carried out in the context of the RDP 2014-2020, more than 20% of the funds have been allocated to strengthening competitiveness, over 9% to market integration, almost 52% to the natural resources and more than 15% for diversification purposes. The rest has been earmarked for technical assistance and the payment of liabilities for the preliminary programme period.

# RURAL DEVELOPMENT PROGRAMME 2014–2020 MEASURES

## TRANSFER OF KNOWLEDGE AND INFORMATION ACTIVITIES **measure 1**

### Objective

To provide additional theoretical and practical knowledge to persons engaged in the agricultural, forestry and food technology sector (for example to farmers, ecological farmers, forest owners). Participation in training courses is free of charge.

### Beneficiaries

The beneficiaries eligible for support are entities governed by public or private law who will hold courses, workshops, lectures and practical demonstrations, or carry out other activities to transfer knowledge and who have the relevant qualifications.

### Description

The measure is being implemented through two sub-measures:

- support for vocational training and skill acquisition actions (sub-measure 1.1);
- support for demonstration activities and information actions (sub-measure 1.2).

### Sub-measure M1.1

Sub-measure 1.1 is intended for training courses required at the time of entry or at the time measure-related obligations are fulfilled, such as: agri-environment-climate payment, organic farming and animal welfare. Support is also intended for the training in numerous other areas that are important for target groups, such as marketing, management, occupational safety in forests, digital skills, processing etc. Training courses may comprise a theoretical and a practical part. A specific target group are young farmers.

### Sub-measure M1.2

Sub-measure 1.2 refers to practical training based on the demonstration of how to use mechanisation, procedures, technologies, machines and practices. Through practical demonstrations the content of these projects will contribute to a higher level of knowledge, in particular about technology, business, and the environment.

### Support

The public support rate amounts to 100% of eligible costs.

## ADVISORY SERVICES, FARM MANAGEMENT SERVICES AND FARM RELIEF SERVICES **measure 2**

### Objective

To improve the specific knowledge and informedness of entities who wish to be involved in agri-environment-climate payment, organic farming and animal welfare measures.

### Beneficiaries

The beneficiaries eligible for support are entities governed by public or private law that provide advisory services to agricultural holdings and have the relevant qualifications.

Advisory services are free of charge for the participants.



## Description

The measure is being implemented through one sub-measure: support in the use of advisory services (sub-measure 2.1)

### Sub-measure M2.1

Sub-measure 2.1 is intended for the provision of advisory services that are required for measures related to organic farming, agri-environment-climate payment and animal welfare. This sub-measure supports the following individual advisory services:

- drafting of an animal welfare programme, which is a prerequisite for entering the animal welfare measure;
- drafting of a programme of activities, which is a prerequisite for entering the agri-environment-climate payment and organic farming measure;
- drafting of an individual plan for the conversion of agricultural holdings from conventional to organic production, which is a commitment for agricultural holdings entering in the measure of organic farming for the first time.
- provision of mandatory individual advisory services for beneficiaries included in measures of organic farming and agri-environment-climate payment at least once during the time of the obligations' duration.

## Support

The public support rate amounts to 100% of eligible costs.

## QUALITY SCHEMES FOR AGRICULTURAL PRODUCTS AND FOODSTUFFS **measure 3**

The measure is divided into two sub-measures:

- support for new participation in quality schemes (sub-measure M03.1),
- support for information and promotion activities carried out by producer groups in the internal market (sub-measure M03.2).

Quality schemes and optional references to quality established on the basis of European legislation, and quality schemes established in accordance with the national legislation are eligible for support under this measure.

### Sub-measure M3.1 - Support for new participation in quality schemes

#### Objective

To raise the value added of agricultural products and to consequently increase the quantity of products from the quality scheme on the market by integrating agricultural holdings more strongly in quality schemes.

#### Beneficiaries

The beneficiaries eligible for support are agricultural holdings that conduct their agricultural activities in the territory of the RS and have registered a certain quality scheme or a certain product for the certification process, and legal entities who have registered at least three agricultural holdings included in an eligible quality scheme or a certain product under an eligible quality scheme for the certification process.

Only producers who market agricultural products intended for human consumption are eligible for support.





## Description

Within the scope of this sub-measure, producers are reimbursed costs incurred due to their inclusion in the supported quality scheme, costs of annual cooperation contribution and costs of reviews necessary to assess conformity with the scheme specifications.

The following quality schemes are eligible for support under this sub-measure:

### 1. quality schemes established on the basis of European legislation:

- protected geographical indication (PGI);
- protected designation of origin (PDO);
- traditional speciality guaranteed (GTS);
- organic production and processing of products;
- wine registered in EU quality schemes' registers (quality wine PDO, wine of superior quality PDO and wine RTD and aromatised beverages made on a wine base with protected geographical indication);

### 2. quality schemes established on the basis of national legislation:

- higher quality;
- selected quality;
- treats from our farms;
- integrated production.

## Support

Support is granted in the form of an annual incentive payment for a maximum of five consecutive years from the date of registration of an individual eligible quality scheme or a product from the eligible quality scheme for the certification process.

The highest amount of public support is EUR 3,000 annually per individual agricultural holding.

The lump-sum amount to cover individual eligible quality schemes or products from eligible quality schemes amounts to 60% of the calculated value of the lump-sum by calculation model.

## Sub-measure M3.2 - Support for information and promotion activities carried out by producer groups in the internal market

### Objective

To improve the provision of information to customers on products from quality schemes and to increase sales.

### Beneficiaries

The beneficiaries eligible for support are producer organisations and groups recognised in accordance with the regulation regulating the recognition of individual producer groups or organisations, if they are legal persons and included in one of the quality schemes.

At least one member newly included in a quality scheme must participate in a producer organisation or group.

### Description

This sub-measure will support promotional activities informing consumers about the specific characteristics of the products from quality schemes, particularly in terms of quality, about the specific characteristics of production methods or about the influence of the geographical area on the quality of products.

Public support is intended to cover the costs incurred in relation to public presentations, advertising and information activities and information and promotional materials etc.

Eligible quality schemes under this sub-measure include all quality schemes established on the basis of the European and national legislation, with the exception of the "Selected quality" scheme.

## Support

Support is granted in the form of non-refundable financial aid.

The public support rate amounts to 70% of eligible costs.

The highest amount of public support is EUR 100,000 per project.

## INVESTMENTS IN PHYSICAL ASSETS **measure 4**

This measure is intended for the development of agriculture, agricultural and food product processing or marketing, and for the development of the agricultural and forest infrastructure.

The measure is divided into three sub-measures:

- support for investments in agricultural holdings (sub-measure M04.1);
- support for investments in the processing, marketing and/or development of agricultural products (sub-measure M04.2);
- support for investments in infrastructure related to the development, modernisation or adaptation of agriculture and forestry (sub-measure M04.3).

### Sub-measure M4.1 - Support for investments in agricultural holdings

#### Objective

To increase productivity and the economic and environmental efficiency of agricultural holdings.

#### Beneficiaries

Beneficiaries are holders of agricultural holdings entered into the register of agricultural holdings performing agricultural activities in the territory of the RS. In case of collective investments the beneficiary eligible for support is a producer group or organisation (for example a company) or another group of farmers (such as co-operatives, machinery rings or groups of farmers who signed a contract on the investment implementation).

For investments in the restructuring of agricultural holdings covering small farms producing an income of at least EUR 4,000 or an income below the minimum gross wage in the Republic of Slovenia only farm holders are entitled to support. Small farms are entitled to investments of up to EUR 50,000 of the eligible costs.

Beneficiaries are also young farmers who are deemed to be natural persons and who established their agricultural holdings for the first time within the period of five years prior to the submission of the application for public tender and who are at the time of submission 18 to 41 years old and have suitable vocational knowledge and skills. In case the application for support refers to an agricultural holding owned by a legal entity, a young farmer is also deemed to be any natural person who performs efficient and long-term control over that legal person in the form of decision-making, related to the management, benefits and financial risks.

The beneficiaries are also social enterprises entered into the Register of agricultural holdings and recognised as holders of social marketing innovations in self-sufficiency and locally produced food who employ vulnerable groups and create green jobs.

#### Description

Within sub-measure 4.1 agricultural holdings can be reimbursed part of the costs of investments in the primary processing of agricultural products, i.e. costs of:

- new construction or reconstruction of real property, the purchase of equipment for agricultural production (stables, outbuildings, warehouse capacities for livestock manure etc.), the purchase



- of relevant information communication technology (ICT) and hardware;
- the purchase of agricultural machinery and mechanical and transport equipment for the transport of animals and material;
- the purchase of agricultural land of up to 10% of the total eligible expenditure of the investment;
- setting up or restoring orchards, olive groves and hop plantations;
- setting up plantations of perennial plants on arable land;
- setting up vineyards;
- the purchase and setting up of nurseries and pertaining equipment;
- the purchase and setting up of anti-hail nets, protective foil against cracking and blighting of fruit, and protective netting against birds;
- setting up of pastures and pens, and the purchase of affiliated equipment for the supervised pasturing of domestic animals or breeding of farmed game;
- arranging the protection of beehives against bears;
- investments in honey production, other bee products and breeding of queen bees;
- investments intended for the efficient use of energy;
- obtaining energy from renewable energy sources;
- arranging road, water or water and energy supply connections of agricultural holdings to public infrastructure;
- arranging agro-melioration works;
- arranging small irrigation systems, their technological upgrades and the purchase and setting up of irrigation equipment;
- the purchase of agricultural machinery, machines and transport equipment (as individual investments only specific agricultural machinery, as collective investments any agricultural machinery, if its economical use has been proved);
- in-kind contribution in the form of the beneficiary's own work and material (wood from own forest);
- and general costs directly connected with the preparation and implementation of the investment.

Investments in restructuring are focused on small agricultural holdings to which agriculture does not provide the main source of income and which have a low degree of market participation and will only improve their economic viability through the investment.

## Support

Support is granted in the form of non-refundable financial aid.

The public support rate amounts to 30% of eligible costs and might increase to a 50% maximum.

The lowest amount of public support is EUR 1,000 per application for investments intended for protecting beehives against bears, and EUR 2,000 per application for other types of investments.

In the entire 2014–2020 programming period beneficiaries that are farms and micro-enterprises may acquire up to EUR 500,000 of public support under this sub-measure. In the entire 2014–2020 programming period, beneficiaries which are small, medium-sized or large enterprises may acquire up to EUR 1,750,000 of public support under this sub-measure.

## Sub-measure M4.2 - Support for investments in the processing, marketing and/ or development of agricultural products

### Objective

To improve competitiveness of the agro-industry, increase the value added of agricultural products and improve environmental efficiency of food processing plants.

### Beneficiaries

The beneficiaries eligible for support are legal and natural persons engaged in the processing or marketing of agricultural products as companies, cooperatives or institutes, sole traders, farm holders involved in the production, processing or marketing of agricultural products, farm holders authorised to perform a subsidiary on-farm activity, holders of subsidiary on-farm activities who are not farm holders, registered agricultural and pastoral communities processing milk on a common pasture or plain and economic interest groupings.



The beneficiaries eligible for support are also small farms defined as farms that in the year prior to the publication of the public call for tenders had an operating income in the minimum amount of EUR 4,000 or an amount below the minimum gross wage in the RS. Small farmers are entitled to investments of up to EUR 50,000 of the total recognized value.

The beneficiaries eligible for support are also young farmers who fulfil the conditions from measure 4.1.

## Description

Under sub-measure M04.2 the beneficiaries may be reimbursed part of the costs of investment in processing and marketing, i.e. costs of:

- the construction or reconstruction of real property;
- in-kind contribution of the beneficiary in the form of personal work or personally owned wood for investments in the arrangement or reconstruction of simple and undemanding buildings if the beneficiary is a farm holder or holder of a supplementary on-farm activity who is not a farm holder;
- the purchase of equipment and devices, including the purchase of laboratory equipment and ICT equipment;
- the production of biogas by using organic waste from agricultural sources;
- investments intended for the efficient use of energy;
- obtaining energy from renewable energy sources on agricultural holdings and in the food-processing industry;
- general costs directly connected to the preparation and implementation of the investment.

## Support

Under sub-measure 4.2 support is granted in the form of non-refundable and refundable financial aid.

### *Non-refundable financial aid*

The public support rate amounts to 30% of eligible costs of the investment and might increase to 50% maximum. For investments in the processing of agricultural products into non-agricultural products the public support rates are lower.

The lowest amount of public support is EUR 5,000 per application. In the entire 2014–2020 programme period, beneficiaries that are farms and micro-enterprises may acquire up to EUR 1,500,000 of public support under this sub-measure. In the same programme period, beneficiaries that are small enterprises may acquire up to EUR 3,000,000 of public support under this sub-measure, while beneficiaries being medium-sized or large enterprises may acquire up to EUR 5,000,000 of public support under this sub-measure.

### *Refundable financial aid*

Part of the funds under this sub-measure will be allocated as refundable financial aid in the form of financial instruments (guarantees for the insurance of bank loans).

## **Sub-measure M4.3 - Support for investments in infrastructure related to the development, modernisation or adaptation of agriculture and forestry**

There are four operations under this sub-measure:

- implementation of agro-melioration in land consolidation areas (operation 1);
- construction of irrigation systems intended for multiple users (operation 2);
- technological upgrading of large irrigation systems intended for multiple users (operation 3);
- arrangement of forest infrastructure (operation 4).



## Objective

To arrange and improve agricultural and forest infrastructure with the aim of better managing agricultural and forest land.

## Beneficiaries

The beneficiaries eligible for support in operations 1, 2 and 3 are entitled holders of agricultural holdings and natural and legal persons authorised by owners of agricultural land to implement investments.

The beneficiaries eligible for support in operation 4 are entitled owners and co-owners of private forests and their associations, agricultural and pasture communities, and other natural and legal persons authorised to implement investments.

## Description

Operation 1 supports the implementation of agro-melioration in land consolidation areas. Supported are demanding and undemanding agro-melioration. The implemented agro-melioration also includes land consolidation by means of which the arable land (land plots) of individual owners of agricultural land in a land consolidation area are enlarged.

Within operations 2 and 3 support is intended for irrigation systems for multiple users. Operation 2 is intended for the construction, while operation 3 is intended for the technological upgrading of irrigation systems, which transfer water from a source to individual users. An irrigation system intended for a large number of users consists of an extraction facility and primary and secondary irrigation canals. Irrigation equipment is the subject of sub-measure M04.1 support.

Operation 4 is intended to support investments in the construction and reconstruction of forest roads and the construction, reconstruction and preparation of skid trails.

## Support

In all operations, support is allocated in the form of non-refundable financial aid.

In operation 1, the public support rate amounts to 100% of eligible costs. The lowest amount of public support is EUR 2,000 per application.

In operations 2 and 3, the public support rate amounts to 100% of eligible costs. The lowest amount of public support is EUR 5,000 per application.

In operation 4, the public support rate amounts to 50% of eligible costs. The lowest amount of public support is EUR 500 per application. In the entire 2014–2020 programming period, a beneficiary may acquire up to EUR 500,000 of public support.

## DEVELOPMENT OF FARMS AND ENTERPRISES **measure M6**

The purpose of the measure is to establish and develop farms and non-agricultural activities in rural areas. Incentives are intended to contribute to the activation of endogenous potential in the local environment, which will result in strengthening the rural economy, increase the market orientation of farms, create new jobs and raise added value.

The measure will be implemented through three sub-measures:

- business start-up aid for young farmers (sub-measure M06.1),
- support for investments in the establishment and development of non-agricultural activities (sub-measure M04.2);
- business start-up aid for the development of small farms (sub-measure M06.3)



## Sub-measure M6.1 - Business start-up aid for young farmers

### Objective

To help improve the age structure of holders of agricultural holdings and improve the management of agricultural holdings along with their competitiveness and thus facilitate the speedier restructuring of this sector, and at the same time the creation of new jobs and thus an increase in employment in the agricultural sector.

### Beneficiaries

The beneficiaries eligible for support are young farmers or legal entities – companies in which young farmers are the sole shareholders and managers. On the day of the application's submission young farmers must be from 18 to 40 years of age, have appropriate vocational knowledge and skills and are establishing an agricultural holding for the first time.

A farm is established by taking over ownership of the farm, entering the owner into the register of agricultural holdings and by fulfilling the first milestone in the business plan. If bookkeeping for primary agricultural production has not yet been established, its establishment must be the first milestone in the business plan. The beneficiary may establish the agricultural holding 24 months prior to the submission of the application for public tender at the most. The establishment of the farm must not yet be completed upon the submission of the application for public tender.

### Description

The support under sub-measure 6.1 is intended for young farmers to establish an agricultural holding and agricultural activities.

The amount of support is determined as a lump sum amount. The amount is intended for the fulfilment of the objectives and milestones defined in the three-year business plan. In the business plan a young farmer must present the economic development of the farm and the contribution to horizontal objectives.

### Support

Support is granted in the form of non-refundable financial aid.

The support of EUR 45,000 is granted to a beneficiary who is employed or plans to employ in an agricultural holding – farm or in an agricultural holding with a legal entity – a company which is the holder of an agricultural holding. The employment of a natural person beneficiary in an agricultural holding means that the person, i.e. the young farmer, has pension and disability as well as health insurance coverage from an agricultural activity. The employment of a beneficiary who is a legal entity – a company – means, that the young farmer as a manager has signed a full time contract on employment with a legal entity – a company which is the holder of an agricultural holding.

The amount of support for a beneficiary who does not provide employment amounts to EUR 18,600.

Public support is paid in two instalments, as follows:

- the first instalment of 70% of allocated funds is paid upon the issue of a decision on the allocation of funds or upon the employment of young farmers who plan employment,
- the second instalment of up to 30% of the allocated funds is paid upon the correct implementation of the business plan.



## Sub-measure M6.3 - Business start-up aid for the development of small farms

### Objective

To provide for the development of small farms and agricultural land located mainly in areas facing natural or other constraints and to improve their potential for production, processing and marketing of agricultural products.

### Beneficiaries

The beneficiary eligible for support is the farm holder entered into the Register of agricultural holdings (RAH).

Small farms are farms that have at least 3 and no more than 6 hectares of comparable agricultural area, with not less than 3 livestock units and not more than 15 livestock units (LU), ensuring a grazing livestock density (cattle, sheep, goats, deer) of at least 0.7 LU/ha of permanent grassland. Exceptions are made for farms included in the control of organic farming, which must ensure grazing livestock density of at least 0.5 LU/ha of permanent grassland.

Support is granted to those small farms whose surfaces are mainly located in areas with natural or other specific constraints (ANCs) (in which utilised agricultural land (UAA) accounts for at least 50% of the area).

### Description

The support under sub-measure M06.3 is intended for the development of small farms located in areas with natural or other specific constraints (ANCs). The development of small farms is of key importance from the aspect of preserving agricultural activity as well as from the aspect of performing eco-system services provided by such farms in the area of environmental protection, conservation of typical agricultural landscape and maintaining population density in rural areas.

### Support

Support is granted in the form of non-refundable financial aid, paid as a lump sum for the purpose of implementing the objectives of the three-year business plan.

The amount of public support is EUR 5,000 per beneficiary.

Public support is paid in two instalments, as follows:

1. The first instalment of 70% of allocated funds is paid upon the issue of the decision on the allocation of funds.
2. The second instalment of 30% of allocated funds is paid upon the correct implementation of activities from the business plan.

## Sub-measure M6.4 - Support for investments in the establishment and development of non-agricultural activities

### Objective

To stimulate the development of non-agricultural activities for the greater use of endogenous potentials to provide conditions for the creation of green jobs and additional sources of income in the countryside.

### Beneficiaries

The beneficiaries are natural persons with a registered subsidiary on-farm activity and micro-enterprises in rural areas. Small enterprises can be beneficiaries of investments intended to add value to wood that are not supported under sub-measure M08.6.

The place of establishment must be located in settlements with less than 5,000 inhabitants.



## Description

Sub-measure M06.4 introduces financial instruments and forms of repayable financing, by means of which we wish to provide beneficiaries with easier access to financial resources and stimulate faster economic development of rural areas.

Priority will be given to non-agricultural activities related to:

- adding value to wood,
- local self-sufficiency,
- green tourism,
- natural and cultural heritage, and traditional knowledge,
- social entrepreneurship,
- social protection services,
- organic waste management,
- heat and power generation from renewable energy sources, such as wood biomass, biomass, manure, liquid manure, water, wind and sun.

## Support

Support is granted as refundable financial aid in the form of financial instruments (guarantee to insure bank loans).

## BASIC SERVICES AND VILLAGE RENEWAL IN RURAL AREAS **measure M7**

**Sub-measure M7.3 -Support for broadband infrastructure, including its establishment, improvement and expansion, passive broadband infrastructure and the provision of access to broadband internet and solutions related to e-administration**

### Objective

To provide the local population and economy with the possibility of access to the broadband electronic communication network.

### Beneficiaries

The beneficiaries eligible for support under this sub-measure are municipalities or a consortium of municipalities.

A municipality or a consortium of municipalities selects a co-investor or a private partner in accordance with the regulations regulating public procurement and public-private partnership and applies to a public tender together with the selected co-investor. These private funds from the co-investor or the private partner must represent at least 50% of the investment value.

### Description

Within this measure one single sub-measure will be implemented: Support for broadband infrastructure, including its establishment, improvement and expansion, passive broadband infrastructure and the provision of access to broadband internet and solutions related to e-administration (sub-measure M07.3)

The purpose of this measure is to set up broadband networks in settlements with fewer than 5,000 inhabitants. The areas where broadband infrastructure will be constructed for the needs of this measure are defined as areas where such broadband connections are not available at the time of the submission of the application for public tender and where there is no commercial interest in its construction, or as areas where new interested customers do not have the opportunity to acquire a broadband connection.

In order to utilize the funds earmarked for this purpose as efficiently as possible, support will only be provided to projects in areas that have included the construction of broadband connections in their





local development programmes, either at the level of one municipality or at the level of several municipalities, and projects that have enabled the construction of a broadband network in synergy with the construction of another small infrastructure in the countryside, which will make it more efficient use of the funding available for this measure.

### Support

Support is granted in the form of non-refundable financial aid.

The public support rate amounts to 50% of eligible costs of the project or investment.

The project or the investment in the construction of broadband networks will be financed with private and public funds.

The highest amount of public support is EUR 1,200 per individual broadband access.

## INVESTMENTS IN THE DEVELOPMENT OF FOREST AREAS AND THE IMPROVEMENT OF FOREST VIABILITY **measure M8**

This measure stimulates investments in the development of forest areas and the improvement of forest viability, which includes the regeneration of forests after natural disaster (glaze ice) and investments in forest technologies and the processing and mobilisation of wood.

The measure is being implemented through two sub-measures:

- support for remedying damage to forests due to forest fires and natural disasters and catastrophic events (sub-measure M08.4);
- support for investments in forestry technologies and in processing, mobilisation and marketing of forest products (sub-measure M08.6).

### Sub-measure M8.4 - Support for remedying damage to forests due to forest fires and natural disasters and catastrophic events

Two operations are being carried out under this sub-measure, i.e.:

- Remedying damage and restoration of forests after a natural disaster,
- Arrangement of skid trails required for forest restoration.

Within the operation "Remedying damage and restoration of forests after natural disasters" two further activities are being implemented:

- the purchase of forest tree seedlings and the material required to protect seedlings from wild game;
- the remedy of damage and restoration of forests.

### Objective

To remedy damage and to restore forests damaged by glaze ice, plant diseases and insect infestations (as a result of ice damage), and to arrange skid trails necessary for the restoration of forests.

### Beneficiaries

The beneficiary eligible for support for the purchase of planting material and material for the protection of seedlings is the Slovenian Forest Service.

The beneficiaries eligible for support for remedying damage and restoring forest are private and public owners and co-owners of forests (including agricultural communities).



The beneficiaries eligible for support for the arrangement of skid trails required for forest restoration are natural and legal persons who are owners and co-owners of forests. Beneficiaries are also other natural and legal persons who are forest owners and have obtained an approval for the arrangement of skid trails from the owners of the land on which the skid trails are being arranged.

## Description

This sub-measure is intended to improve forests' ecological functions while regenerating those forests damaged in a natural disaster. The sub-measure is being implemented on the basis of the adopted forest restoration plans after natural disasters prepared by the Slovenian Forest Service.

Eligible costs within this sub-measure are costs of work done to remedy damage and restore forests, such as the removal of fallen trees from protective forests, preparation of surfaces for restoration, planting of seedlings, protection of young plants on restored surfaces, care for damaged young plants and thinner poles, forest hygiene and care for restored surfaces, and the costs of material, such as seedlings, cases, poles and fences.

Support is also granted for the arrangement of skid trails intended exclusively for forest restoration.

The costs are eligible from the date of the occurrence of the natural disaster, i.e. from 30 January 2014.

## Support

In both operations, support is allocated in the form of non-refundable financial aid.

The public support rate for the purchase of planting material and material for the protection of seedlings amounts to 100% of eligible costs.

Support rates for individual works to remedy damage and restore forests depend on the levels of importance of the ecological and social functions of the forest. Recognised values per unit for individual works and materials are defined in accordance with the relevant national regulation.

Support for the arrangement of skid trails amounts to 50% of eligible costs.

## Sub-measure M8.6 - Support for investments in forestry technologies and in processing, mobilisation and marketing of forest products

Two operations will be implemented under sub-measure 8.6, i.e.:

- Investments in the purchase of new machinery and equipment for timber harvesting;
- Investments in pre-industrial processing of wood.

## Objective

To intensify forest management, professionalize work in forests, reduce the number of accidents when working in forests and to add value to forest products.

## Beneficiaries

The beneficiaries eligible for support within the operation "Investments in the purchase of new machinery and equipment for timber felling and harvesting" are legal persons, with the exception of municipalities, and natural persons, agricultural and pastoral communities, who are private owners, co-owners or lessees of forests, and companies and sole traders and undertakings that comply with the conditions for micro, small or medium-sized enterprises and are engaged in timber felling and harvesting.

The beneficiaries eligible for support within the operation "Investments in non-industrial processing of wood" are companies, cooperatives, sole traders and farms with a registered subsidiary on-farm activity, that are defined as micro or small enterprises.



## Description

Sub-measure M08.6 is intended for the sustainable development of forestry as an economic branch by promoting investments in forest technologies, mobilisation and pre-industrial wood processing. These investments are of key importance for sustainable forest management, strengthening forest-wood chains, increasing the added value of wood, improving professionalism and safety in forestry work and for the potential creation of new jobs.

Pre-industrial wood processing includes sawing and other activities, such as drying, impregnation and processing of waste wood produced factories into wood-fuels (pellets, wood chips).

## Support

Under sub-measure M08.6 support is granted in the form of non-refundable and refundable financial aid.

### *Non-refundable financial aid*

The public support rate amounts to 40% of eligible costs.

### *Refundable financial aid*

Part of the support in the operation "Investments in pre-industrial processing of wood" is granted as refundable financial aid in the form of financial instruments (guarantee to insure bank loans).



## SETTING UP OF PRODUCER GROUPS AND ORGANISATIONS measure M9

## Objective

To increase integration and market orientation in the agricultural and forest sectors through organised sales and joint action on the market.

## Beneficiaries

The beneficiaries under this measure are newly-established producer groups and organisations in possession of a significant market share; they must be legal entities and fulfil the conditions for micro-, small and medium-sized enterprises. They must be established in agriculture or forestry and be officially recognised in accordance with the national rules regulating producer groups and organisations.

## Description

Funds are allocated to the beneficiary for the period from the submission of the application to public tender to the end of the calendar year prior to which the five-year period of recognising the producer organisation expires. Support is granted to the beneficiary for an individual calendar year.

The amount of support is defined on the basis of the annual revenue of the producer organisation from the sale of recognised products in the preceding year, taking into consideration the support rate with regard to the year of recognition. For the first year, the annual sales revenue can be calculated as the average annual income of individual members in the three calendar years prior to the submission of application to public tender.

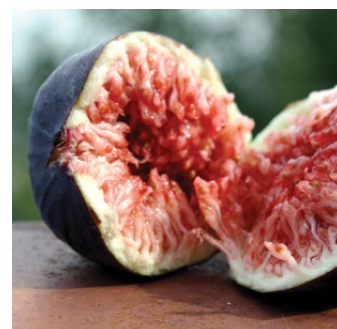
## Support

Support is granted in the form of non-refundable financial aid on the basis of a business plan.

The support rate amounts to:

- 10 per cent of the share of market production for the first year following recognition,
- 9 per cent of the share of market production for the second year following recognition,
- 8 per cent of the share of market production for the third year following recognition,
- 7 per cent of the share of market production for the fourth year following recognition,
- 6 per cent of the share of market production for the fifth year following recognition.

The highest amount of support to be paid annually is EUR 100,000. The last instalment is paid after the correct implementation of the business plan has been verified.



# AGRI-ENVIRONMENT-CLIMATE PAYMENTS **measure M10**

The measure will be implemented through two sub-measures:

- payment of agri-environment-climate commitments (sub-measure M10.1)
- support for the conservation, sustainable use and development of genetic resources in agriculture (sub-measure M10.2)

## Sub-measure M10.1 - Payment of agri-environment-climate commitments

Sub-measure M10.1 (AEC measure) will be implemented within 19 operations:

1. Arable farming and vegetable cultivation;
2. Hop growing;
3. Fruit growing;
4. Wine growing;
5. Permanent grassland I;
6. Permanent grassland II;
7. Special grassland habitats;
8. Grassland habitats of butterflies;
9. Habitats of birds of humid extensive meadows;
10. Litter meadows;
11. Water sources;
12. Conservation of steep meadow habitats;
13. Hummocky meadows;
14. Livestock rearing in areas of occurrence of large carnivores;
15. Mountain pasture;
16. High-trunk meadow orchards;
17. Preservation of hedgerows;
18. Breeding of local breeds in danger of being lost to farming;
19. Preserving plant genetic resources under threat of genetic erosion.

### Objective

To encourage agricultural holdings to manage agricultural land in a manner that reduces the negative impact of farming on the environment, contributes to the mitigation of and adaptation to climate change, and ensures the implementation of socially important services and intangible public goods.

### Beneficiaries

The beneficiaries eligible for payments are agricultural holdings that participate voluntarily and have met the prescribed conditions and requirements for a period of at least five years.

### Description

AEC measure supports agriculture in its environmental function and is intended to encourage above-standard sustainable agricultural practices focused on biodiversity and landscape preservation, appropriate water and soil management, climate change mitigation and on the adaptation of farming to climate change.

These are not income payments but payments to cover additional costs and income foregone due to above-standard requirements. Farmers receive these payments for the work and efforts performed as the environmental caretakers preserving and protecting nature, water and soil, and maintaining the landscape within their farming activities.

AEC measure is performed through operations, which are determined in advance and in which an agricultural holding may be included. Most operations include mandatory and optional requirements.

Certain operations can be implemented throughout Slovenia, while certain operations can be implemented in target areas, such as in the catchment areas of surface water bodies and groundwater



bodies referred to in the River Basin Management Plan, and areas that are important for the preservation of biodiversity.

## Support

Support is paid in the form of payment per hectare or livestock unit, in exceptional cases per cubic meter (m<sup>3</sup>) of used liquid organic fertilizer within the requirement "Fertilisation with organic fertilizers with low emissions into the air", or per running meter (m) within the operation "Preservation of hedgerows".

## ORGANIC FARMING **measure M11**



Measure M11 (measure OF) will be implemented through two sub-measures:

- payments for the conversion to organic farming practices and methods (sub-measure 11.1),
- payments for the preservation of organic farming practices and methods (sub-measure 11.2).

## Objective

To encourage agricultural holdings to take up organic farming.

## Beneficiaries

The beneficiaries eligible for payments are agricultural holdings that voluntarily participate in the implementation of this measure and meet the prescribed conditions and requirements for a period of at least five years.

## Description

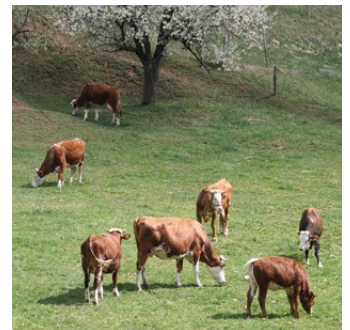
Under this measure organic farming and conversion to organic farming are supported, because nature-friendly agricultural practices significantly contribute to the provision of public assets, in particular to the preservation and improvement of biotic diversity, the preservation of drinking water resources, soil fertility, cultivated agricultural land and to the protection of the environment in general.

## Support

Support is allocated in the form of non-refundable financial aid as payment per hectare of agricultural land or per bee colony in beekeeping.

The payment is calculated on the basis of additional costs and loss of income due to adopted commitments.

An agricultural holding that does not breed herbivorous animals (cattle, sheep, goats, horses, and deer) as prescribed in the regulations on organic farming is not entitled to payment for permanent grassland under this sub-measure.



# PAYMENTS FOR AREAS WITH NATURAL OR OTHER SPECIFIC CONSTRAINTS **measure M13**

## Objective

To preserve agricultural land and to further expand the cultivation of agricultural land, preserve the settlement of the countryside and provide public benefits in areas facing natural or other specific constraints (ANC areas).

## Beneficiaries

The beneficiaries are holders of agricultural holdings who conduct agricultural activities in ANC areas.

## Description

The support under measure 13 (ANC measure) is granted for the maintenance and further performance of agricultural activities in ANC areas with relatively higher costs and loss of income (poorer harvest) in comparison to farming outside these areas.

This therefore means the so-called compensation payments, which are required due to additional costs and loss of income in farming and which contribute to the conservation and promotion of sustainable farming systems, the conservation of cultural landscape in the countryside and the sustainable use of agricultural land.

The measure is divided into three sub-measures:

- compensation payment for mountainous areas (sub-measure M13.1),
- compensation payment for other areas with important natural constraints (sub-measure M13.2),
- compensation payment for other areas with specific constraints (sub-measure M13.3).

For the definition of ANC areas under this measure Slovenia used areas from the programme period 2007–2013. Within the ANC reform Slovenia will define a new delimitation of areas that are not mountainous but have important natural constraints.

## Support

The support within the scope of this measure is granted in the form of non-refundable financial aid per hectare of agricultural land.

For the definition of the annual payment additional (higher) costs and loss of revenue (smaller harvest) in mountainous areas compared to agricultural activities outside ANC areas are taken into account.

The annual payment is calculated for every agricultural holding separately.

Following the introduction of a new scheme in 2017, i.e. "the payment for areas with natural constraints" for mountainous agricultural areas with an inclination from 35% to 50% and for agricultural areas with an inclination equal to or above 50% under the first pillar, also payments within the scope of the first pillar are taken into consideration in the payment for ANC. The formula for the level of support for ANC payment is as follows:

ANC payment/ha = fixed part + (no. of points of agricultural holding x point value x 0.45) + converted payment for areas with natural constraints from the first pillar.

The ANC payment comprises three parts:

- the fixed part of the payment is an amount determined according to the difficulty ranking of an agricultural holding;
- the variable part of the payment is calculated for every agricultural holding separately. It is cal-



culated as a 0.45 share of the product of the number of points prescribed for an individual agricultural holding on the basis of the register of agricultural holdings in ANC and the point value; whereby the point value is EUR 0.40;

- the converted payment for areas with natural constraints is the payment for areas with natural constraints expressed in EUR per hectare of agricultural land.

## ANIMAL WELFARE **measure M14**

### Objective

To stimulate breeders to engage in above-standard forms of animal breeding.

### Beneficiaries

The beneficiaries eligible for payments under measure M14 (animal welfare measure) are holders of agricultural holdings who are active farmers voluntarily participating in the animal welfare measure and complying with the prescribed conditions.

### Description

Three operations will be implemented under the animal welfare measure, i.e. for pigs, beef cattle, sheep and goats.

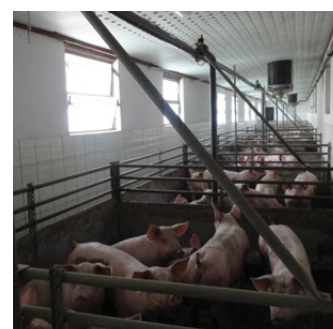
The duration of the commitment under the animal welfare measure is one year.

To obtain payments for the animal welfare operation for pigs the beneficiary must comply with at least one requirement from the range of requirements for breeding sows and gilts, weaners and production pigs. To obtain payments for the animal welfare operation for cattle and the animal welfare operation for sheep and goats the beneficiary must provide for cattle, sheep and goat grazing.

### Support

Support is granted in the form of non-refundable financial aid, i.e. as payment per livestock unit.

The payment covers all additional costs and the lost income due to the commitments taken under the animal welfare measure.



## COOPERATION **measure M16**

The M16 measure is implemented through four sub-measures:

- support for pilot projects and for the development of new products, practices, processes and technologies (sub-measure M16.2);
- support for horizontal and vertical cooperation between stakeholders in the supply chain aimed at establishing and developing short supply chains and local markets and for promotion activities at the local level that are related to developing short supply chains and local markets (sub-measure M16.4);
- support for joint measures aimed at mitigating climate change or adapting to climate change and for joint approaches to environmental projects and permanent environmental practices (sub-measure M16.5);
- support for diversification of farming activities to activities concerning health care, social integration, community-supported agriculture and education on the environment and food (sub-measure M16.9).

The objective of this measure is to encourage the transfer of knowledge and innovations from research into agricultural practice.

This measure supports various forms of cooperation through which various actors in rural areas will be able to overcome economic, environmental and other constraints that they face due to fragmentation and lack of connection.



The purpose of this measure is in particular to promote cooperation projects aimed at greater productivity and better sustainability in agriculture.

Support is intended for projects that include practical aspects and results and not for pure research projects. The findings and results of the projects must be communicated to the interested public and submitted to target groups.

### **Sub-measure M16.2 - Support for pilot projects and for the development of new products, practices, processes and technologies**

#### **Objective**

To establish cooperation between various players in agriculture and rural development in implementing projects related to the technological development in agriculture, forestry and food industry that will contribute to attaining objectives of rural development.

#### **Beneficiaries**

The beneficiaries within the scope of this measure are various forms of cooperation, which include at least two entities:

- forms of cooperation among various entities in the agricultural sector, in the food chain and in the forestry sector and other entities that contribute to achieving the objectives and to implementing priority tasks within the rural development policy, including producer groups, cooperatives and inter-branch organisations;
- operational groups of the EIP for agricultural productivity and sustainability.

#### **Description**

Support will be granted to projects resulting in new achievements, solutions and innovative approaches in technological development in agriculture, forestry and the food industry.

#### **Support**

Public support is granted in the form of non-refundable financial aid.

The public support rate amounts to 100% of eligible costs. In cases when the beneficiary partly co-finances the costs of the project, the support rate can be lowered accordingly. The maximum and minimum permitted support rate will be determined by individual public calls for tenders. A share of co-financing the costs by the beneficiary will be taken into account in the selection criteria. The support rate is reduced accordingly also in accordance with the rules on state aid.

Support is granted for the duration of the project, but not for more than 7 years.

### **Sub-measure M16.4 - Support for horizontal and vertical cooperation between stakeholders in the supply chain aimed at establishing and developing short supply chains and local markets and for promotion activities at the local level, which are related to developing short supply chains and local markets**

#### **Objective**

To establish new short supply chains and local markets, innovative forms of action in these areas and promotion activity projects at the local level, which are related to developing short supply chains and local markets.

#### **Beneficiaries**

The beneficiaries are farms or agricultural holdings with registered supplementary activities, co-operatives, companies or sole traders.





## Description

The purpose of the sub-measure is cooperation between various players in agriculture and rural development in implementing projects related to short supply chains and local markets that will contribute to attaining objectives of rural development.

## Support

Support is granted in the form of non-refundable financial aid.

The public support rate amounts to 100% of eligible costs. In cases when the beneficiary partly co-finances the costs of the project, the support rate can be lowered accordingly. The maximum and minimum permitted support rate will be determined by individual public calls for tenders. In the selection criteria the share of co-financing costs on the part of the beneficiary will be taken into account. The support rate is reduced accordingly also in accordance with the rules on state aid.

The amount of support for individual projects depends on the number of participants in the project and the sales rate and ranges from EUR 45,000 to EUR 100,000.

Support is granted for the duration of the project implementation, i.e. from 24 to 36 months.

## Sub-measure M16.5 - Support for joint measures aimed at mitigating climate change or adapting to climate change and for joint approaches to environmental projects and permanent environmental practices

## Objective

To establish cooperation between various players in agriculture and rural development in implementing projects related to the environment and climate changes that will contribute to attaining objectives of rural development.

## Beneficiaries

The beneficiaries within the scope of this measure are various forms of cooperation, which include at least two entities:

- forms of cooperation among different entities in the agricultural sector, in the food chain and in the forestry sector and other entities that contribute to achieving the objectives and to implementing priority tasks within the rural development policy, including producer groups, cooperatives and inter-branch organisations;
- operational groups of the EIP for agricultural productivity and sustainability.

## Description

In the implementation of environmental and climate change projects priority support will be given to projects that contribute to attaining environmental and nature protection objectives, particularly to the restoration and improvement of species condition and habitat types in the NATURA 2000 network and care and efficient management of natural assets and projects, which will contribute to reducing the negative impact of agriculture on the quality of surface water and groundwater.

## Support

Support is granted in the form of non-refundable financial aid.

The public support rate amounts to 100% of eligible costs. In cases when the beneficiary partly co-finances the costs of the project, the intensity support rate can be lowered accordingly. The maximum and minimum permitted support rate will be determined by individual public calls for tenders. For the selection criteria, the share of co-financing the costs by the beneficiary will be taken into account. The support rate is reduced accordingly also in accordance with the rules on state aid.

The highest amount of support for an individual project is EUR 250,000.

Support is granted for the duration of the project, but not for more than 7 years.

## Sub-measure M16.9 - Support for the diversification of farming activities to activities concerning health care, social integration, community-supported agriculture and education about the environment and food

### Objective

To consider the possibilities of developing farm activities that refer to education, health care, social protection and the protection of persons with disabilities.

### Beneficiaries

The beneficiaries are farmers or holders of subsidiary on-farm activities, legal entities performing activities in education, health care, social protection, protection of persons with disabilities or humanitarian activities, other legal persons performing non-profit activities in health protection or social integration of vulnerable social groups.

### Description

Support will be granted to projects of cooperation between farms and legal entities; as part of this test activities will be performed in education, health care, social protection and protection of persons with disabilities with the purpose of considering the possibility of development of subsidiary on-farm activities in these fields.

### Support

The support rate amounts to 100% of eligible costs. The maximum amount of support per each application for public tender amounts to EUR 45,000.

Support is granted for the duration of the project implementation, i.e. for a period from 24 to 36 months.

## SUPPORT TO LOCAL DEVELOPMENT WITHIN THE LEADER INITIATIVE (COMMUNITY-LED LOCAL DEVELOPMENT) **measure M19**

Measure 19 (LEADER) is a tool for promoting joint local development following the "bottom-up approach". The "bottom-up approach" enables local people – by forming local partnerships of so-called Local Action Groups (LAGs) – to participate actively in decision-making on priority tasks and development objectives of the local area, including financial resources, in order to attain the objectives of the local area.

In the programme period 2014–2020 the LEADER measure is being implemented as part of the common instrument – the Community-Led Local Development – the CLLD instrument – within which LAGs dispose not only of funds granted by the EAFRD but also of funds granted by the European Regional Development Fund (ERDF) and the European Maritime and Fisheries Fund (EMFF). The combination of various financial resources through the CLLD enables LAGs to implement comprehensive and more complex operations that are not strictly limited to rural areas but also include fishing and urban settlements. Individual LAGs were established in areas with common local needs and challenges with the common aim of meeting the local development needs and attaining the set objectives defined in the local development strategy (LDS).

This approach makes it possible to overcome a wide array of challenges in different environments and better flexibility in the attainment of the objectives, and corresponds to the actual needs of the local area.



The LEADER measure is being implemented through four sub-measures:

- preparatory support (the M19.1 sub-measure)
- support for implementing operations under the community-led local development strategy (M19.2 sub-measure);
- preparation and implementation of cooperation activities of the local action group (M19.3 sub-measure) and
- support for running costs and animation (M19.4 sub-measure).

## Objective

The objective of the LEADER measure is to promote social inclusion, reduce poverty and enhance the economic development of rural areas, with an emphasis on promoting local development in rural areas.

## Beneficiaries

Beneficiaries under sub-measure 19.1 are local partnerships which prepared LDSs.

Beneficiaries under sub-measure 19.2 are natural and legal persons. In the event of operations to be implemented within the so-called main measures of the RDP 2014–2020, the beneficiaries eligible for support are only LAGs or groups of natural and legal persons performing operations for the common benefit and/or common use.

Beneficiaries under sub-measure 19.3 and 19.4 are LAGs.

## Description

The purpose of sub-measure M19.1 is to strengthen the formation of local partnerships, enhance institutional qualifications, training and networking for the preparation and implementation of the community-led LDS. For the payment of preparatory support local partnerships must be formed according to the requirements for LAG formation and the LDS need to be prepared.

Support under sub-measure M19.2 is intended for the co-financing of costs incurred in the implementation of operations undertaken by LAGs or local players whose results contribute to the implementation of objectives set in the LDS. Under this sub-measure operations and types of measures are not defined in detail, because the type of operations depends on objectives set in individual LDSs. Operations are selected by LAGs on the basis of clear selection criteria.

The co-financing of LAG costs that incur in the implementation of individual operations of LAG cooperation in the Member State (cooperation between LAGs) or with areas in various EU Member States or with areas in Third Countries (transnational cooperation) is subject to sub-measure M19.3. In order to receive support payment the beneficiary must apply to the published call for tenders.

Support under sub-measure M19.4 is intended for the co-financing of costs that incur in the management and operation of LAGs, including the monitoring and evaluation of the LDS, the animation of the LAG area and aid to potential beneficiaries for the development of project ideas and the preparation of operations. A lead fund has been determined for financing running costs and animation. On the basis of the financial framework the lead fund contributed most financial resources to individual LAG areas. For the purpose of implementing this sub-measure, LAGs must submit claims for payment.

## Support

Support is granted in the form of non-refundable financial aid.

Preparatory support under sub-measure M19.1 was paid from all funds included in the LDS in an individual local partnership area. Support was allocated in the form of a lump sum amounting to EUR 20,000 for the confirmed LDS.

For sub-measure M19.2 the support rate for individual operations is determined by LAGs. The public support rate amounts to maximum 85% of eligible costs per operation. When determining the



amount of granted funds state aid rules must be taken into consideration. For the determination of the public support rate it should be taken into account that operations with added value (e.g. joint interest, group of beneficiaries, public access to operation results, innovative characteristics of an operation at the local level and the availability of the budget, integrated projects) receive a higher share of support than those without added value. The lowest amount of public support per individual operation is EUR 2,000. The highest amount of public support per individual operation is EUR 300,000.

The public support rate for sub-measure M19.3 amounts to 85% of eligible costs. When determining the support rate state aid rules must be taken into consideration. The lowest amount of public support is EUR 5,000. The highest amount of public support for individual LAGs is EUR 100,000 per individual operation.

On the basis of the adopted Partnership Agreement an individual LAG may earmark up to 20% of joint public expenditure incurred for LDS for the implementation of sub-measure M19.4. The public support rate amounts to 100% of eligible costs. LAGs may request a lower support rate. The lowest public support amount of an individual request for the payment under this sub-measure is EUR 5,000.

Under sub-measures M19.2 and M19.3 only those costs are considered eligible that incurred after the decision confirming the implementation of the operation had been issued. General costs and costs of services of outsourcers (such as fees for architect, engineer and consultation services, costs of acquiring building, project or technical documentation, fees relating to advisory services on environmental and economic sustainability, including costs of feasibility studies, costs of surveying and agronomic services and costs of supervision of construction and craft works) are considered eligible if they were incurred after 1 January 2014. Under sub-measure M19.4 only those costs are considered eligible that incurred after the decision confirming the LDS and the LAGs had been issued.

# INDICATIVE BREAKDOWN BY MEASURES

Below, the indicative breakdown by measures and sub-measures of the RDP 2014–2020 is presented.

<b>CODE</b>	<b>NAME OF MEASURE/SUB-MEASURE</b>	<b>TOTAL FUNDS INTENDED FOR THE MEASURE/SUB-MEASURE</b>
<b>1</b>	<b>Transfer of knowledge and information activities</b>	<b>12,500,000.00</b>
1.1	Support for vocational training and skill acquisition actions	11,500,000.00
1.2	Support for demonstration activities and information action	1,000,000.00
<b>2</b>	<b>Advisory services, farm management services, farm relief services</b>	<b>10,768,000.00</b>
2.1	Support for help concerning the use of e-services	10,768,000.00
<b>3</b>	<b>Quality schemes for agricultural products and foodstuffs</b>	<b>3,400,000.00</b>
3.1	Support for new participation in quality schemes	2,600,000.00
3.2	Support for information and promotion activities carried out by producer groups in the internal market	800,000.00
<b>4</b>	<b>Investments in physical assets</b>	<b>206,465,816.01</b>
4.1	Support in investments in agricultural holdings	98,633,956.36
4.2	Support for investments in the processing, marketing and/or development of agricultural products	74,761,261.70
4.3	Support for investments in infrastructure related to the development, modernisation or adaptation in agriculture and forestry	33,070,597.95
<b>6</b>	<b>Development of farms and enterprises</b>	<b>123,011,333.33</b>
6.1	Business start-up aid for young farmers	60,650,000.00
6.3	Business start-up aid for the development of small farms	20,000,000.00
6.4	Support for investments in the establishment and development of non-agricultural activities	42,361,333.33
<b>7</b>	<b>Basic services and renovation of villages in rural areas</b>	<b>10,000,000.00</b>
7.3	Support for broadband infrastructure, including its establishment, improvement and expansion, passive broadband infrastructure and the provision of access to broadband internet and solutions related to e-administration	10,000,000.00
<b>8</b>	<b>Investments in the development of forest areas and improving the condition of forests</b>	<b>59,481,066.67</b>
8.4	Support for remedying damage to forests due to forest fires and natural disasters and catastrophic events	20,454,400.00
8.6	Support for investments in forest technologies and the processing, mobilisation and marketing of forest products (sub-measure M08.6).	39,026,666.67
<b>9</b>	<b>Setting up producers' groups and organisations</b>	<b>2,227,950.00</b>
9.1	Setting up producers' groups and organisations in the agricultural and forestry sector	2,227,950.00
<b>10</b>	<b>Agri-environment-climate change payments</b>	<b>203,607,386.67</b>
10.1	Payment of agri-environment-climate commitments	203,287,386.67

10.2	Support for the conservation, sustainable use and development of genetic resources in agriculture	320,000.00
<b>11</b>	<b>Organic Farming</b>	<b>65,300,000.00</b>
11.1	Payments for conversion to organic farming practices and methods	16,978,000.00
11.2	Payments for the implementation of organic farming practices and methods	48,322,000.00
<b>13</b>	<b>Payments for areas with natural or other specific constraints</b>	<b>265,933,333.33</b>
13.1	Payment of compensation for mountainous areas	207,428,000.00
13.2	Payment of compensation for other areas with specific natural constraints	10,637,333.33
13.3	Payment of compensation for other areas with specific constraints	47,868,000.00
<b>14</b>	<b>Animal welfare</b>	<b>32,533,333.33</b>
14.1	Payments for the implementation of the animal welfare measure	32,533,333.33
<b>16</b>	<b>Cooperation</b>	<b>20,062,500.00</b>
16.2	Support for pilot projects and for the development of new products, practices, processes and technologies	9,198,125.00
16.4	Support for horizontal and vertical cooperation between stakeholders in the supply chain aimed at establishing and developing short supply chains and local markets and for promotion activities at the local level that are related to developing short supply chains and local markets	3,932,500.00
16.5	Support for joint measures aimed at mitigating climate change or adapting to climate change and for joint approaches to environmental projects and permanent environmental practices	5,332,125.00
16.9	Support for the diversification of farming activities into activities concerning health care, social integration, community-supported agriculture and education on the environment and food	1,599,750.00
<b>19</b>	<b>LEADER</b>	<b>53,365,613.75</b>
19.1	Preparatory support	600,000.00
19.2	Support for implementing operations under the community-led local development strategy	34,409,771.25
19.3	Preparation and implementation of the means of cooperation of a local action group	4,000,000.00
19.4	Support for running costs and animation	14,355,842.50
	<b>Technical assistance</b>	<b>33,261,333.33</b>
	<b>Measure 113 Early retirement*</b>	<b>5,295,000.00</b>
	<b>TOTAL</b>	<b>1,107,212,666.42</b>

\* Foreseen financial commitments based on the obligations undertaken within the implementation of the measure "Early retirement of farmers from the RDP 2006–2006 and RDP 2007–2013 (monthly payment of rents)".

The content of the RDP 2014–2020 and the distribution of financial means among the measures may be changed in the programme period if the general socio-economic and environmental frameworks and therewith the programme starting points change or if the monitoring and evaluation results indicate that the set measures are unsuitable for the implementation of the programme objectives.

# RURAL NETWORK

The Rural Network provides important support in the implementation of the RDP 2014–2020 and is its main communication tool. The Network informs potential beneficiaries of the possibility of access to RDP funds, on their commitments etc., and the general public on the importance of RDP implementation for the Slovenian countryside. The main tools the Rural Network uses to communicate are the RDP website, the weekly e-newsletter PrePlet and printed materials. It also participates in TV and radio broadcasts, and organises various workshops and presentations. Communication takes place in the form of a two-way flow of information, which means that the Network also obtains information from individuals and organisations at the local level and distributes information through various channels. You are kindly invited to send us rural development-related information!

The Network's mission is also to promote qualification, cooperation and integration. Activities are aimed at improved implementation of the RDP (such as reducing the mistakes made by beneficiaries), promoting cooperation (in particular within measure M09 Producer Groups, measure M16 Cooperation and measure M19 LEADER) and the integration between different partners and stakeholders in Slovenia and beyond its borders, for example within the European Network for Rural Development. Integration and cooperation are important areas that should be strengthened and people encouraged to cooperate. The Network also encourages knowledge and innovation transfer, integration of partners, informing target groups etc.

## Do you wish to participate?

Benefits of the participation in the Network:

- to be informed of the possibilities of participating in various workshops, public discussions and working groups dealing with rural development;
- to receive the weekly e-newsletter PrePlet with information on announced events, publications of public calls for tenders etc.;
- to actively participate in various network activities;
- two-way flow of information through the communication of current news and proposals related to rural development, which are published on the RDP website or in the e-newsletter PrePlet;
- transfer of information to other stakeholders.

Membership in the Network is voluntary and open to all organisations and individuals.

Please, register at the following website: <http://www.program-podezelja.si/sl/zelite-sodelovati/clanstvo-in-sodelovanje>.

Rural Network

Ministry of Agriculture, Forestry and Food  
Dunajska 22  
1000 Ljubljana

Phone: +386 1 478 00 92

E-mail: [mreza-podezelje.mkgp@gov.si](mailto:mreza-podezelje.mkgp@gov.si)

[www.facebook.com/MrezaZaPodezelje](http://www.facebook.com/MrezaZaPodezelje)



# PROVISION OF INFORMATION TO THE PUBLIC ON ACTIVITIES RECEIVING SUPPORT WITHIN THE RDP 2014–2020

Each beneficiary eligible for funding from the RDP 2014–2020 is obliged to inform the public of the implementation of activities (implementation of investments, measures on certain surfaces, public procurements, informing the public, communication with the public etc.), for which they receive funds within the RDP 2014-2020.

The obligation to inform the public or to announce an activity arises when the beneficiary starts to perform the activity, i.e. when they are entitled to receive funds within the RDP 2014–2020 by way of a decision, contract or other document.

The method of announcement of activities differs with regard to the type of activity and the overall public support rate.

Specific instructions have been elaborated for the provision of information to the public on activities receiving support within the RDP 2014–2020; they are available on the following website: <http://www.program-podezelja.si>.



# CONTACT POINTS

For additional information on the RDP 2014–2020 please contact the contact points stated below or the contact points published on the following website: <http://www.program-podezelja.si/sl/infoteka/info-tocke>.

Ministry of Agriculture, Forestry and Food  
Dunajska 22, 1000 Ljubljana  
E-mail: [gp.mkgp@gov.si](mailto:gp.mkgp@gov.si)  
Phone: +386 1 478 9128  
Website: <http://www.program-podezelja.si>  
Information: general information on the RDP and measures related thereto

Agency of the Republic of Slovenia for Agricultural Markets and Rural Development  
Dunajska 160, 1000 Ljubljana  
E-mail: [aktrp@gov.si](mailto:aktrp@gov.si)  
Phone: +386 1 580 7792 (call centre)  
Website: [www.arsktrp.gov.si](http://www.arsktrp.gov.si)  
Information: information on public tenders

## **Rural Network**

Ministry of Agriculture, Forestry and Food  
Dunajska 22, 1000 Ljubljana  
E-mail: [mreza-podezelje.mkgp@gov.si](mailto:mreza-podezelje.mkgp@gov.si)  
Phone: +386 1 478 9128  
Website: <http://www.program-podezelja.si>  
Information: general information on the RDP and the integration in the Network

*Author of the Handbook:* Ministry of Agriculture, Forestry and Food, Structural Policy and Rural Development Division

*Conceptual Design:* Tamara Karlo

*Photographs taken by:* Archives of the Ministry of Agriculture, Forestry and Food, Jurij Beguš, Silvester Kranjec, Tadeja Primožič, Tanja Gorjan, Marovt sistemi d.o.o., Primož Lavre, David Lotrič, Gregor Harb, Zoran Planko, Sladžan Bacio, Gregor Petrič, Heidi Bartolič, Simon Kovačič, Rok Breznik, Franci Medved, Gregor Petrič, Katja Mlakar, Rock1977 (Wikipedia), Agricultural Institute of Slovenia, Bavarian State Ministry for Food, Agriculture and Forestry, European Commission, Ana Ogorelec, Slavko Krpič, Peter Skoberne, Tatjana Čelik

*Front page photo taken by:* Archives of the Ministry of Agriculture, Forestry and Food, Jurij Beguš, Franci Medved, Simona Kovačič, Gregor Petrič, Katja Mlakar, Gregor Harb, Rok Breznik, [www.nasvojjzemlji.si](http://www.nasvojjzemlji.si)

*Slovenian language editing:* Tina Kralj, Secretariat-General of the Government of the Republic of Slovenia

*Designed by:* VIKRA, Petra Vidonja, s. p.

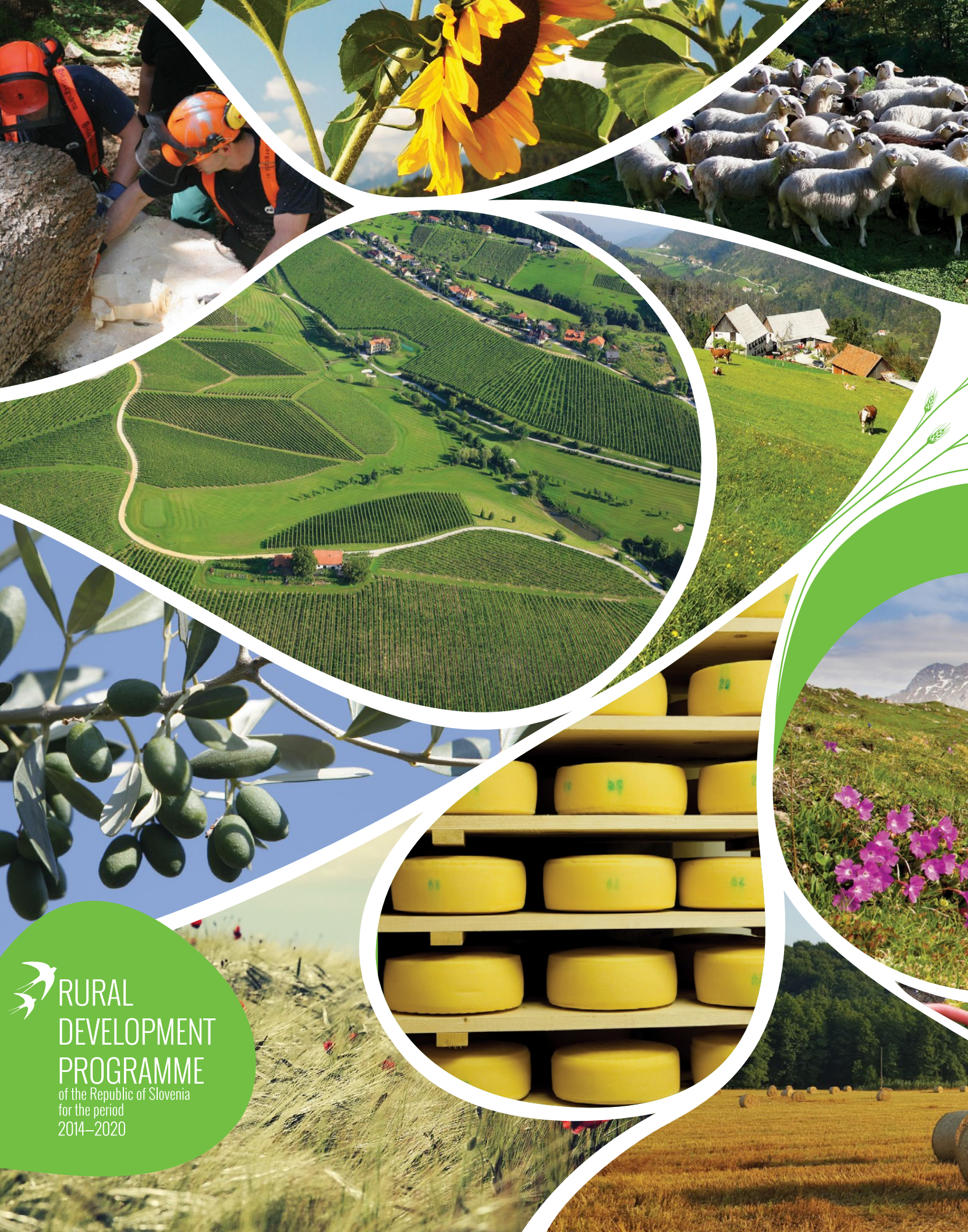
*English translation:* Sonja Lesnik in Josh Rocchio; Secretariat-General of the Government of the Republic of Slovenia

*Published by:* Ministry of Agriculture, Forestry and Food of the Republic of Slovenia, Ljubljana, May 2017

---

The contents are the responsibility of the Ministry of Agriculture, Forestry and Food which is also the management authority tasked with the implementation of the Rural Development Programme of the Republic of Slovenia 2014–2020. Publication co-financed by: European Union, European Agricultural Fund for Rural Development, and the Republic of Slovenia.





 **RURAL  
DEVELOPMENT  
PROGRAMME**  
of the Republic of Slovenia  
for the period  
2014–2020